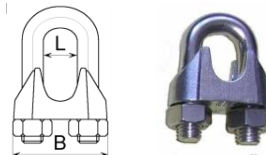


ZACISKI LINOWE NIERDZEWNE

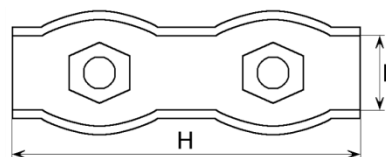
ZACISK LINOWY KABŁĄKOWY wg DIN 741 nierdzewny AISI316

| kod | rozmiar nominalny [mm] | na linę [φ] | L [mm] | B [mm] | waga [kg/100szt] |
|--------|---------------------------|-------------|-----------|-----------|---------------------|
| NZI04 | 4,0 | 2,5-4,0 | 6 | 22 | 1,60 |
| NZI05 | 5,0 | 4,0-5,0 | 6 | 23 | 1,70 |
| NZI065 | 6,5 | 5,0-6,5 | 8 | 26 | 2,20 |
| NZI08 | 8,0 | 6,5-8,0 | 11 | 30 | 3,70 |
| NZI10 | 10,0 | 8,0-10,0 | 12 | 34 | 6,20 |
| NZI12 | 12,0 | 11,0-12,0 | 12 | 37 | 8,20 |
| NZI16 | 16,0 | 13,0-16,0 | 17 | 50 | 22,90 |



ZACISK LINOWY SIODEŁKOWY PODWÓJNY nierdzewny AISI316

| kod | rozmiar nominalny [mm] | na linę [φ] | L [mm] | H [mm] | waga [kg/100szt] |
|--------|---------------------------|-------------|-----------|-----------|---------------------|
| NZIs03 | 3 | 2,0-3,0 | 7 | 35 | 1,30 |
| NZIs04 | 4 | 3,0-4,0 | 8 | 40 | 2,10 |
| NZIs05 | 5 | 4,0-5,0 | 10 | 50 | 2,70 |
| NZIs06 | 6 | 5,0-6,0 | 12 | 60 | 5,30 |

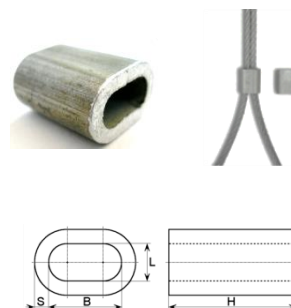


ZŁĄCZKI DO LIN

ZŁĄCZKA PODŁUŻNA wg DIN 3093

alumiuniowa

| kod | rozmiar nominalny [mm] | na linę [φ] | H [mm] | L [mm] | B [mm] | S [mm] | waga [kg/100szt] |
|-------|---------------------------|-------------|-----------|-----------|-----------|-----------|---------------------|
| Az010 | 1,0 | 0,6-1,0 | 5 | 1,2 | 2,2 | 0,80 | 0,008 |
| Az015 | 1,5 | 1,0-1,5 | 6 | 1,7 | 3,3 | 0,9 | 0,014 |
| Az020 | 2,0 | 1,5-2,0 | 7 | 2,2 | 4,4 | 0,85 | 0,025 |
| Az030 | 3,0 | 2,5-3,0 | 11 | 3,3 | 6,6 | 1,25 | 0,075 |
| Az040 | 4,0 | 3,0-4,0 | 14 | 4,4 | 8,8 | 1,70 | 0,181 |
| Az045 | 4,5 | 4,0-4,5 | 16 | 4,9 | 9,8 | 1,90 | 0,261 |
| Az050 | 5,0 | 4,0-5,0 | 18 | 5,5 | 11,0 | 2,10 | 0,385 |
| Az060 | 6,0 | 5,0-6,0 | 21 | 6,6 | 13,2 | 2,50 | 0,586 |
| Az080 | 8,0 | 6,5-8,0 | 28 | 8,8 | 17,6 | 3,30 | 1,390 |
| Az100 | 10,0 | 8,0-10,0 | 35 | 10,9 | 21,8 | 4,10 | 2,670 |
| Az120 | 12,0 | 11,0-12,0 | 42 | 13,2 | 26,4 | 4,90 | 4,580 |
| Az140 | 14,0 | 12,0-14,0 | 50 | 15,0 | 30,4 | 5,90 | 7,300 |
| Az160 | 16,0 | 14,0-16,0 | 57 | 17,5 | 34,7 | 7,00 | 11,200 |



ZŁĄCZKA PODŁUŻNA wg DIN 3093

miedziana

| Kod | Rozmiar nominalny | Na linę [φ] [mm] | H [mm] | L [mm] | B [mm] | S [mm] | Waga [kg/100szt] |
|-------|-------------------|---------------------|-----------|-----------|-----------|-----------|---------------------|
| Cz01 | 1 | 0,6-1,0 | 5 | 1,1 | 2,2 | 1,0 | 0,029 |
| Cz015 | 1,5 | 1,0-1,5 | 5,9 | 1,8 | 3,3 | 1,0 | 0,058 |
| Cz02 | 2 | 1,0-2,0 | 9 | 2,3 | 4,4 | 1,05 | 0,10 |
| Cz03 | 3 | 2,0-3,0 | 11 | 3,3 | 6,6 | 1,25 | 0,29 |



ZŁĄCZKA NIERDZEWNA A4

| Kod | Rozmiar nominalny | Na linę [φ] [mm] | H [mm] | L [mm] | B [mm] | S [mm] | Waga [kg/100szt] |
|------|-------------------|---------------------|-----------|-----------|-----------|-----------|---------------------|
| Nz02 | 2 | 1,0-2,0 | 9 | 2,3 | 4,4 | 1,05 | 0,10 |
| Nz03 | 3 | 2,0-3,0 | 11 | 3,3 | 6,6 | 1,25 | 0,29 |
| Nz04 | 4 | 3,0-4,0 | 14 | 4,4 | 8,8 | 1,70 | 0,62 |
| Nz05 | 5 | 4,0-5,0 | 18 | 5,5 | 11,0 | 2,10 | 1,25 |
| Nz06 | 6 | 5,0-6,0 | 21 | 6,6 | 13,2 | 2,50 | 2,05 |



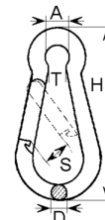
Przed złożeniem zamówienia proszę potwierdzić dostępność towaru.

Przedstawiona oferta cenowa ma charakter informacyjny, nie stanowi oferty handlowej w rozumieniu Art.66 par.1 Kodeksu Cywilnego.

KARABIŃCZYKI, OGNIWKA NIERDZEWNE

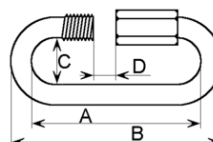
KARABIŃCZYK wg DIN 5299 C nierdzewny AISI316

| kod | rozmiar nominalny | max wytrzymał. [kg] | A [mm] | D [mm] | H [mm] | S [mm] | T [mm] | waga [kg/100szt] |
|---------|-------------------|------------------------|-----------|-----------|-----------|-----------|-----------|---------------------|
| NKar040 | 40 x4 | 80 | 6 | 4 | 40 | 7 | 5 | 0,8 |
| NKar050 | 50 x5 | 100 | 8 | 5 | 50 | 7 | 7 | 1,5 |
| NKar060 | 60 x6 | 120 | 9 | 6 | 60 | 8 | 8 | 2,7 |
| NKar070 | 70 x7 | 180 | 10 | 7 | 70 | 9 | 8 | 4,2 |
| NKar080 | 80 x 8 | 230 | 12 | 8 | 80 | 11 | 11 | 6,2 |
| NKar100 | 100 x10 | 250 | 15 | 10 | 100 | 14 | 16 | 12,2 |
| NKar120 | 120 x11 | 350 | 19 | 11 | 120 | 21 | 12 | 18,1 |
| NKar140 | 140 x12 | 450 | 20 | 12 | 140 | 22 | 18 | 25,7 |
| NKar160 | 16x13 | 510 | 23 | 13 | 160 | 30 | 20 | 34,1 |



OGNIWO SKRĘCANE nierdzewne AISI316

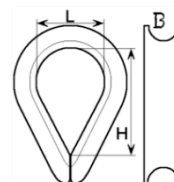
| kod | rozmiar nominalny | max wytrzymał. [kg] | A | B | C | D | waga [kg/100szt] |
|---------|-------------------|------------------------|------|------|------|------|---------------------|
| | | | [mm] | [mm] | [mm] | [mm] | |
| NOgS035 | 3.5N | 50 | 30 | 37 | 11 | 5 | 0,90 |
| NOgS04 | 4N | 90 | 34 | 42 | 11 | 5 | 1,30 |
| NOgS05 | 5N | 140 | 41 | 51 | 13 | 7 | 2,10 |
| NOgS06 | 6N | 200 | 46 | 58 | 15 | 7 | 3,40 |
| NOgS08 | 8N | 350 | 58 | 74 | 16 | 9 | 7,50 |
| NOgS10 | 10N | 550 | 72 | 92 | 21 | 13 | 14,70 |
| NOgS12 | 12N | 750 | 82 | 106 | 24 | 11 | 23,00 |



KAUSZE NIERDZEWNE

KAUSZA wg DIN 6899B nierdzewna AISI 316

| kod | rozmiar nominalny [mm] | na linę [φ] | L | H | waga [kg/100szt] |
|-------|---------------------------|-------------|------|------|---------------------|
| | | | [mm] | [mm] | |
| NKa03 | 3 | 2,5 - 3,0 | 11 | 22 | 0,20 |
| NKa04 | 4 | 3,0 - 4,0 | 13 | 27 | 0,50 |
| NKa05 | 5 | 4,0 - 5,0 | 14 | 27 | 0,50 |
| NKa06 | 6 | 5,0 - 6,5 | 16 | 31 | 0,70 |
| NKa08 | 8 | 6,5 - 8,0 | 18 | 37 | 1,30 |
| NKa10 | 10 | 8,0 - 10,0 | 22 | 46 | 2,60 |
| NKa12 | 12 | 10,0 - 12,0 | 27 | 54 | 3,50 |
| NKa14 | 14 | 12,0 - 14,0 | 34 | 56 | 8,50 |
| NKa16 | 16 | 14,0 - 16,0 | 36 | 72 | 11,40 |



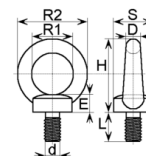
Przed złożeniem zamówienia proszę potwierdzić dostępność towaru.

Przedstawiona oferta cenowa ma charakter informacyjny, nie stanowi oferty handlowej w rozumieniu Art.66 par.1 Kodeksu Cywilnego.

OCZKA ŚRUBOWE NIERDZEWNE

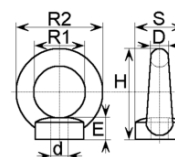
OCZKO ze śrubą wg DIN 580 nierdzewne AISI316

| kod | rozmiar nom. | max wytrzymałość | L | E | D | S | H | R1 | R2 | waga |
|--------|-----------------|---------------------|------|------|------|------|------|------|------|-------------|
| | d[mm] | [kg] | [mm] | [mm] | [mm] | [mm] | [mm] | [mm] | [mm] | [kg/100szt] |
| NOcs06 | 6 | 140 | 13,0 | 8,0 | 6 | 20 | 31 | 16 | 28 | 2,60 |
| NOcs08 | 8 | 140 | 15,0 | 7,0 | 8 | 20 | 36 | 20 | 36 | 4,50 |
| NOcs10 | 10 | 230 | 18,0 | 10,0 | 10 | 25 | 45 | 25 | 45 | 9,10 |
| NOcs12 | 12 | 340 | 22,0 | 12,0 | 12 | 30 | 56 | 30 | 53 | 15,70 |
| NOcs16 | 16 | 700 | 27,0 | 14,0 | 14 | 35 | 60 | 35 | 63 | 26,40 |



OCZKO z nakrętką wg DIN 582 nierdzewne AISI316

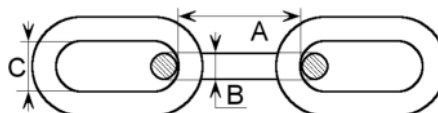
| kod | rozmiar nom. | max wytrzymałość | E | D | S | H | R1 | R2 | waga |
|--------|-----------------|---------------------|------|------|------|------|------|------|-------------|
| | d[mm] | [kg] | [mm] | [mm] | [mm] | [mm] | [mm] | [mm] | [kg/100szt] |
| NOcn06 | 6 | 140 | 10 | 8 | 20 | 36 | 16 | 34 | 5,50 |
| NOcn08 | 8 | 140 | 10 | 8 | 20 | 36 | 20 | 36 | 5,65 |
| NOcn10 | 10 | 230 | 11,0 | 9 | 25 | 44 | 25 | 43 | 10,60 |
| NOcn12 | 12 | 340 | 12,0 | 12 | 30 | 53 | 30 | 54 | 13,90 |
| NOcn16 | 16 | 700 | 17,0 | 14 | 35 | 61 | 34 | 62 | 21,50 |



ŁAŃCUCHY TECHNICZNE NIERDZEWNE

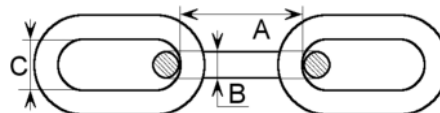
ŁAŃCUCH TECHNICZNY wg DIN766 (PN-75/M-84540) ogniwo krótkie nierdzewny AISI316

| kod | rozmiar nominalny d[mm] | DOR [kg] | A | B | C | waga [kg/m] |
|--------|-------------------------------|-------------|------|------|------|----------------|
| | | | [mm] | [mm] | [mm] | |
| NŁok03 | 3,0 | 80,0 | 16,0 | 3,0 | 5,0 | 0,20 |
| NŁok04 | 4,0 | 150,0 | 16,0 | 4,0 | 7,0 | 0,32 |
| NŁok05 | 5,0 | 250,0 | 18,5 | 5,0 | 7,0 | 0,50 |
| NŁok06 | 6,0 | 350,0 | 18,5 | 6,0 | 8,0 | 0,75 |
| NŁok08 | 8,0 | 630,0 | 24,0 | 8,0 | 10,0 | 1,35 |
| NŁok10 | 10,0 | 1000,0 | 28,0 | 10,0 | 13,0 | 2,25 |
| NŁok12 | 12,0 | 1440,0 | 33,0 | 12,0 | 16,0 | 3,30 |
| NŁok13 | 13,0 | 1600,0 | 36,0 | 13,0 | 18,0 | 3,80 |



ŁAŃCUCH TECHNICZNY wg DIN763 (PN-75/M-84543) ogniwo długie nierdzewny AISI316

| kod | rozmiar nominalny d[mm] | DOR [kg] | A | B | C | waga [kg/m] |
|--------|-------------------------------|-------------|------|------|------|----------------|
| | | | [mm] | [mm] | [mm] | |
| NŁod03 | 3,0 | 60,0 | 26,0 | 3,0 | 5,0 | 0,16 |
| NŁod04 | 4,0 | 100,0 | 32,0 | 4,0 | 8,0 | 0,27 |
| NŁod05 | 5,0 | 160,0 | 36,0 | 5,0 | 10,0 | 0,43 |
| NŁod06 | 6,0 | 200,0 | 42,0 | 6,0 | 12,0 | 0,63 |
| NŁod08 | 8,0 | 400,0 | 46,0 | 8,0 | 16,0 | 1,10 |
| NŁod10 | 10,0 | 630,0 | 66,0 | 10,0 | 21,0 | 1,75 |
| NŁod12 | 12,0 | 750,0 | 82,0 | 12,0 | 24,0 | 2,45 |
| NŁod13 | 13,0 | 1000,0 | 82,0 | 13,0 | 24,0 | 2,95 |



Przed złożeniem zamówienia proszę potwierdzić dostępność towaru.

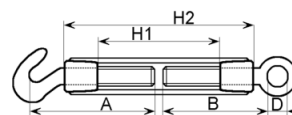
Przedstawiona oferta cenowa ma charakter informacyjny, nie stanowi oferty handlowej w rozumieniu Art.66 par.1 Kodeksu Cywilnego.

ŚCIĄGACZE (ŚRUBY RZYMSKIE) NIERDZEWNE

ŚRUBA RZYMSKA (ŚCIĄGACZ) wg DIN 1480 nierdzewna AISI 316

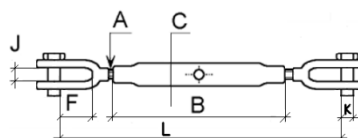
Dostępne w wersji oko-hak

| Kod | Rozmiar nominalny | Max.wytr z.[kg] | H1 [mm] | H2 [mm] | A [mm] | B [mm] | D [mm] | Waga [kg/szt] |
|----------|-------------------|-----------------|---------|---------|--------|--------|--------|---------------|
| NSc06x11 | M 6 | 75 | 87 | 110 | 76 | 76 | 9 | 0,10 |
| NSc08x11 | M 8 | 140 | 80 | 110 | 85 | 81 | 10 | 0,17 |
| NSc10x12 | M10 | 220 | 89 | 120 | 109 | 100 | 14 | 0,295 |
| NSc12x12 | M12 | 310 | 84 | 120 | 112 | 100 | 17 | 0,42 |
| NSc16x17 | M16 | 600 | 116 | 170 | 145 | 140 | 22 | 0,92 |



ŚRUBA RZYMSKA (ŚCIĄGACZ) ZAMKNIĘTA nierdzewna AISI 316

Dostępne w wersji widelki - widelki

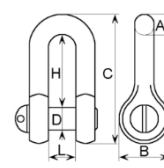


| Kod | Rozm.nom (A) [mm] | DOR [T] | B [mm] | D [mm] | Długość "L" min./max. ~[mm] | C [mm] | F [mm] | J [mm] | K [mm] | Waga [kg/szt] |
|--------|-------------------|---------|--------|--------|-----------------------------|--------|--------|--------|--------|---------------|
| NScZ06 | 6 | 0,20 | 72 | 8 | 125/170 | 10 | 12 | 6 | 5 | 0,09 |
| NScZ08 | 8 | 0,32 | 77 | 12 | 150/210 | 12 | 14 | 8 | 6 | 0,14 |
| NScZ10 | 10 | 0,50 | 80 | 15 | 172/250 | 16 | 16 | 10 | 7 | 0,27 |
| NScZ12 | 12 | 0,70 | 109 | 18 | 220/318 | 20 | 14 | 11,9 | 10 | 0,54 |
| NScZ16 | 16 | 1,20 | 137 | 30 | 285/429 | 24 | 24 | 16 | 12 | 1,00 |

SZAKLE NIERDZEWNE

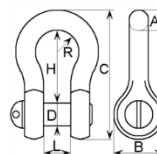
SZAKŁA UNIWERSALNA PODŁUŻNA nierdzewna AISI316

| Kod | Waga [kg/100szt] | Max. Wytrzymał [kg] | A [mm] | B [mm] | C [mm] | D (mm) | H [mm] | L [mm] |
|--------|------------------|---------------------|--------|--------|--------|--------|--------|--------|
| NSza04 | 0,7 | 60 | 4 | 8 | 24 | 4 | 14 | 8,5 |
| NSza05 | 1,5 | 80 | 5 | 10 | 30 | 5 | 18 | 10 |
| NSza06 | 2,7 | 100 | 6 | 12 | 41 | 6 | 26 | 13 |
| NSza08 | 5,7 | 200 | 8 | 16 | 49 | 8 | 29 | 17 |
| NSza10 | 11,9 | 300 | 10 | 21 | 65 | 10 | 39 | 21 |
| NSza12 | 20,0 | 500 | 11 | 24 | 75 | 12 | 46 | 24 |
| NSza16 | 47,0 | 800 | 15 | 32 | 103 | 16 | 64 | 32 |
| NSza19 | 92,0 | 1100 | 20 | 39 | 125 | 19 | 75 | 39 |



SZAKŁA UNIWERSALNA OKRĄGŁA nierdzewna AISI316

| Kod | Waga [kg/100szt] | 2r [mm] | Max. Wytrzymał a [kg] | A [mm] | B [mm] | C [mm] | D (mm) | H [mm] | L [mm] |
|---------|------------------|---------|-----------------------|--------|--------|--------|--------|--------|--------|
| NSzaO04 | 1,0 | 14 | 60 | 4 | 9 | 27 | 4 | 16 | 8,5 |
| NSzaO05 | 1,6 | 16 | 80 | 5 | 10 | 32 | 5 | 20 | 10,5 |
| NSzaO06 | 2,7 | 20 | 100 | 6 | 13 | 41 | 6 | 27 | 13 |
| NSzaO08 | 6,5 | 24 | 200 | 8 | 16 | 52 | 8 | 32 | 17 |
| NSzaO10 | 13,0 | 31 | 300 | 10 | 21 | 65 | 10 | 39 | 21 |
| NSzaO12 | 21,5 | 38 | 500 | 12 | 25 | 85 | 12 | 51 | 24 |
| NSzaO16 | 49,0 | 54 | 800 | 15 | 32 | 107 | 16 | 68 | 34 |
| NSzaO19 | 85,0 | 57 | 1100 | 18 | 38 | 127 | 19 | 82 | 38 |



Przed złożeniem zamówienia proszę potwierdzić dostępność towaru.

Przedstawiona oferta cenowa ma charakter informacyjny, nie stanowi oferty handlowej w rozumieniu Art.66 par.1 Kodeksu Cywilnego.